

# EMOTIONAL DYSREGULATION



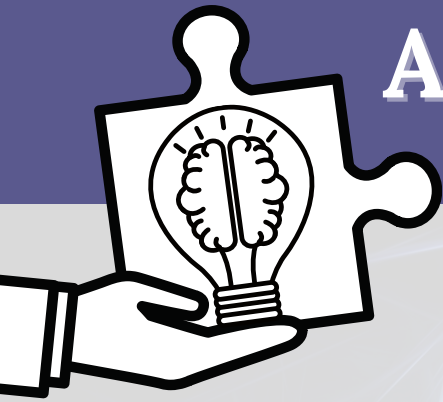
Emotional dysregulation refers to moods that are unstable, and unpredictable within a socially acceptable range.

## LOOK FOR:



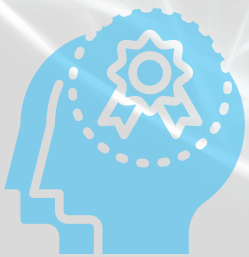
- Saying or doing things without regard for safety/impulsive
- Trouble knowing when to stop an activity
- Moods shift rapidly
- Intention and behavior may be disconnected (*example: may laugh at a sad story*)
- Social isolation





# ACCOMODATIONS FOR PROFESSIONALS

- Take the individual to a quiet area
- In a moment of intense emotion, ask the individual to pause and record (*e.g., out loud or on paper*) their emotions
- Use mindfulness techniques (*reference mindfulness sheet*)
- Predictability and consistency is key, try to schedule your meetings at the same time
- Distracted or agitated individuals can benefit from physical grounding techniques (*e.g., ask your client to describe a small object from the room, in great detail, for 60 seconds*)



Rewarding positive behavior creates a trend of more prosocial behaviors.



CITATIONS

The development of this project was supported through the Brain Injury Services Program (BISP) of Iowa, through contract 5881BI06 with the Iowa Department of Public Health (IDPH). The contents are the sole responsibility of the authors and do not necessarily represent the official views of IDPH.

**IDPH**  
IOWA Department  
of PUBLIC HEALTH