

EMOTIONAL DYSREGULATION



Emotional dysregulation means moods and emotional reactions are unstable and unmanageable.

LOOK FOR:

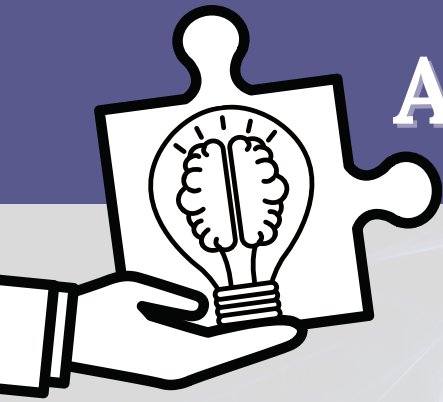


- Saying or doing things without thinking
- Difficulty knowing when to stop an activity
- Doing things quickly or without regard for safety
- Moods shift rapidly (*sudden urge to yell or cry*)
- Intention and behavior may be disconnected (*example: may laugh at a sad story*)



Brain Injury
Alliance

I O W A



ACCOMMODATIONS

- Use mindfulness techniques (*reference mindfulness page*)
- Pay attention to what is happening in your body when you feel agitated (*for example, are you tapping your foot, clenching your fists?*)
- Ask for a short break
- Write down important information before you go into emotional situations
- Create a schedule of what needs to get done to eliminate feeling overwhelmed
- Make a list of people that make you feel safe and heard. Reach out to them when needing support
 - Caregivers - the most important thing you can do is remain calm yourself, do not react to the person's emotions. You can gently guide the person to a quiet area to help them regain control.



CITATIONS

The development of this project was supported through the Brain Injury Services Program (BISP) of Iowa, through contract 5881BI06 with the Iowa Department of Public Health (IDPH). The contents are the sole responsibility of the authors and do not necessarily represent the official views of IDPH.

IDPH
IOWA Department
of PUBLIC HEALTH