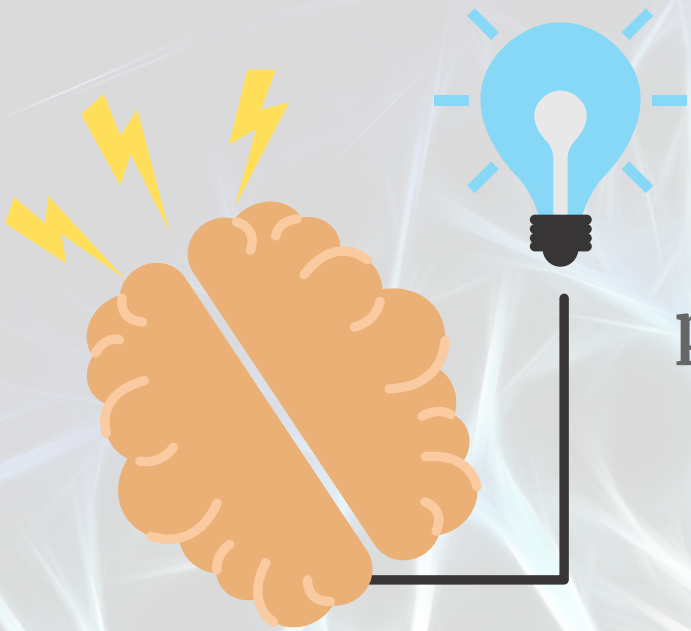


PHYSICAL AND SENSORIMOTOR



Physical and sensorimotor problems can include pain, blurred vision/poor depth perception, light sensitivity, and difficulty hearing.

LOOK FOR:

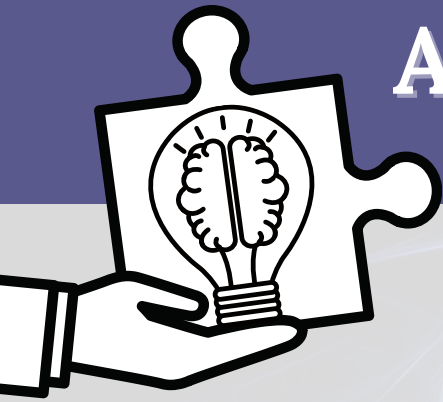


- Dizziness, headaches, difficulty hearing, light/noise sensitivity
- Easily overwhelmed/irritable
- Lack of coordination/focus (*auditory, visual, cognitive*)
- Difficulty reading



Brain Injury
Alliance

I O W A



ACCOMMODATIONS FOR PROFESSIONALS

- Be receptive to symptoms/accommodations
- Flexibility with appointment schedule (*Consider telehealth options*)
- Be conscious of the lighting/environment:
 - *Avoid overhead lights, (especially fluorescent), close blinds, use floor or desk lamps, and suggest wearing sunglasses if necessary*
- Make large print format materials available
- Provide quiet workspace
- Offer flexible/up-front seating at larger meetings
- Watch for signs of agitation/allow frequent breaks
- Ensure that your meeting spaces are accessible for individuals with any degree of physical or sensory limitation.
- Suggest using symptom tracking journal to understand triggers



CITATIONS

The development of this project was supported through the Brain Injury Services Program (BISP) of Iowa, through contract 5881BI06 with the Iowa Department of Public Health (IDPH). The contents are the sole responsibility of the authors and do not necessarily represent the official views of IDPH.

IDPH
IOWA Department
of PUBLIC HEALTH