

ANGER



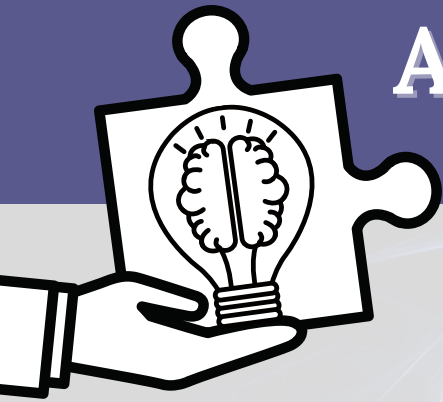
Anger is a common emotional response after brain injury including: irritability, agitation, lowered tolerance.

LOOK FOR:



- Increased heart rate, sweating, muscle tightness, raised voice
- There is usually an ‘on-off’ quality to the anger – an explosive angry outburst one minute, but calm again shortly after
- Difficulties managing/acknowledging their anger
- Blames others for provoking their anger





ACCOMMODATIONS FOR PROFESSIONALS

- Become aware of behaviors and physical states associated with anger
- Utilize basic anger management skills *such as deep breathing, counting backwards from 10, or mindfulness techniques to aid in relaxation*
- Introduce free smartphone apps such as Calm, Breathe2Relax, or Breathe to provide relaxation exercises
- Encourage physical activity (*e.g., exercise/yoga*)
- Recognize triggers for anger

While feeling anger is unavoidable, it is still possible to manage.



CITATIONS

The development of this project was supported through funding from the Iowa Department of Health and Human Services' (Iowa HHS) Brain Injury Services Program (BISP). The contents are the sole responsibility of the authors and do not necessarily represent the official views of Iowa HHS.

Updated May 2023

Public Health
IOWA HHS