

DELAYED PROCESSING



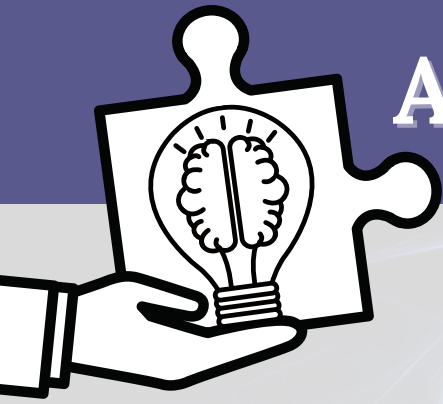
Delayed processing is the brain's decreased/slowed ability to process information you hear, see, or think about.

LOOK FOR:



- Hard time focusing on conversations
- Difficulty following directions or forgetting steps
- Prone to distractions or "zone out"
- Often feeling tired/mentally foggy
- Viewed as unmotivated/slow moving
- Misunderstood as uncooperative, or resistant due to slow responsiveness





ACCOMMODATIONS

- Ask for extra time in groups or classes
- Write down tasks step by step
- Ask for clarification if there is something you do not understand
- Physical activity supports brain function; make sure to add exercise to your day

**ADVOCATE FOR YOUR
NEEDS!**



CITATIONS

The development of this project was supported through funding from the Iowa Department of Health and Human Services' (Iowa HHS) Brain Injury Services Program (BISP). The contents are the sole responsibility of the authors and do not necessarily represent the official views of Iowa HHS.

Updated May 2023

Public Health
IOWA HHS