

FATIGUE



Fatigue is a continual state of mental tiredness; can occur after physical activity, or most commonly mental activity.

LOOK FOR:

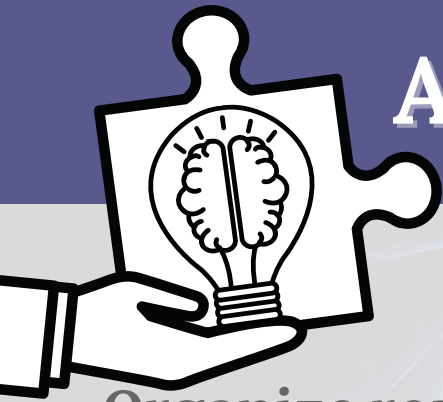


- Withdrawn, short answers
- Loss of appetite
- Shortness of breath
- Slower movement and speech (*dull tone*)
- Irritability, anxiety, crying episodes
- Increased forgetfulness
- Lack of motivation and interest



Brain Injury
Alliance

I O W A



ACCOMMODATIONS

- Organize routines around the times of day you feel your best
- When you first start feeling tired, **STOP** and **REST!**
- Avoid fluorescent and/or dim lighting
- Schedule rest periods
- Keep your home and work environments uncluttered
- Use assistive technology/mechanical aids
- Reduce stress
- Avoid or limit alcohol use
- Ensure you are getting plenty of sleep
- Talk to your provider about the role medication can play in fatigue
- Talk to your provider if your fatigue affects your daily functioning



CITATIONS

The development of this project was supported through funding from the Iowa Department of Health and Human Services' (Iowa HHS) Brain Injury Services Program (BISP). The contents are the sole responsibility of the authors and do not necessarily represent the official views of Iowa HHS.

Updated May 2023

Public Health
IOWA HHS