

# MENTAL INFLEXIBILITY



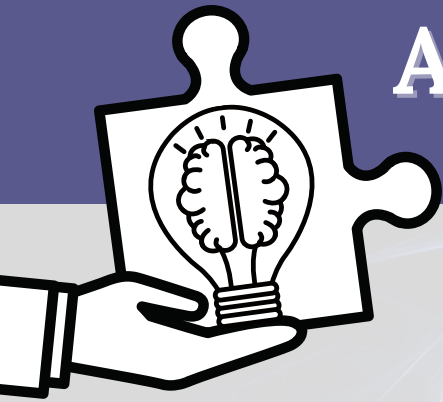
Mental inflexibility is the inability to respond to changes, such as thinking about multiple ideas at once or switching between thoughts.

## LOOK FOR:



- Challenges in making decisions when faced with a new problem
- Changing in their mind after a decision has been made
- Learning new routines/processes, or understanding another's approach/perspective
- May appear rigid, stubborn, or uncooperative





# ACCOMMODATIONS FOR PROFESSIONALS

- Suggest setting reminders of deadlines in calendars
- Notify in advance of schedule/routine changes
- Help prepare for transitions (*e.g., if the individual is being referred to a new provider, introduce them by providing a warm hand-off*)
- Draw attention to irrational conclusions or impulsive behaviors and give the individual opportunity to respond or behave differently
- Teach social skills (*e.g., assertive communication or active listening*)
- Help individuals think about decisions from someone else's point of view (*e.g., role play different scenarios that could make the client late for an appointment*)



CITATIONS

The development of this project was supported through funding from the Iowa Department of Health and Human Services' (Iowa HHS) Brain Injury Services Program (BISP). The contents are the sole responsibility of the authors and do not necessarily represent the official views of Iowa HHS.

Updated May 2023

**Public Health**  
IOWA HHS